

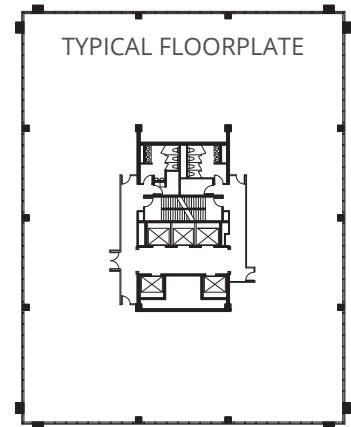
LoDo Towers

1331 17th Street



**LoDo's Only
High-Rise Towers**
offering outstanding
western views

- 13 Stories
- 224,683 SF
- 17,386 SF floorplates



- Best parking ratio Downtown - 2.0/1,000 SF
- Secure bike storage with repair station
- Full service bank and sandwich shop on-site
- 10,000 SF Multi-purpose amenity center
- 9' ceilings

View
Available
Space



lodotowers.com

Jamie Gard 303.260.4341 jamie.gard@nmrk.com
Jeff Castleton 303.260.4391 jeff.castleton@nmrk.com
Patrick Boyhan 303.260.4375 patrick.boyhan@nmrk.com

Bradley Jacobs 469.250.7845

NEWMARK

nmrk.com

CIM

cimgroup.com

LoDo Towers

1331 17th Street

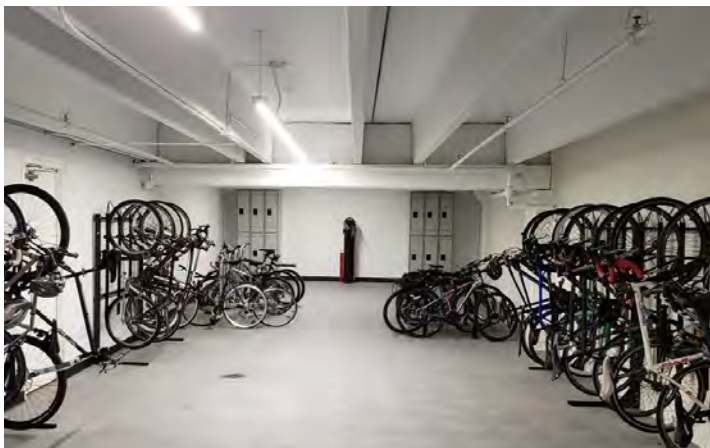
10,000 SF Multi-Purpose
Amenity Center



Contemporary Lobby



Upgraded Building Entry



Bike Storage



In-Building Conference Room



Project Amenity Center



Generous Attached Parking Garage

CIM A CIM Operated Property
CIM is a community-focused real estate and infrastructure owner,
operator and lender. Leasing information: www.cimgroup.com

CIM Group is not affiliated or associated with, is not endorsed by, does not endorse, and is not sponsored by or a sponsor of the tenants or of its products or services pictured or mentioned on this web site. The names, logos and all related product and service names, design marks and slogans are the trademarks or service marks of their respective companies.

The information contained herein has been obtained from sources deemed reliable but has not been verified and no guarantee, warranty or representation, either express or implied, is made with respect to such information. Terms of sale or lease and availability are subject to change or withdrawal without notice.